

Boxilla - Enterprise Level KVM and AV/IT Manager

OVERVIEW

Boxilla is an Enterprise Level KVM & AV/IT system management platform that works with InvisaPC (DTX1000-T, DTX1000-R, DTX1000SA-T, DTX1000SA-R, DTX1002-T, DTX1002-R) and Modular and Compact DKM KVM Matrix Switches.

Boxilla provides a centralized, easy-to-use command center that gives you full monitoring and control of not just devices, but your entire system across the enterprise. Control user access. Monitor device status. Proactively diagnose and address network problems before they occur. Upgrade thousands of remote devices with one click.

FEATURES

- ◆ Command center dashboard provides an instant snapshot of the KVM network.
- ◆ Manage an unlimited number of endpoints in your enterprise-level IP-based KVM system.
- ◆ Control deployments, monitoring, upgrades, troubleshooting, security, status—everything!
- ◆ Use with InvisaPC to provide a software based, future-proof solution!



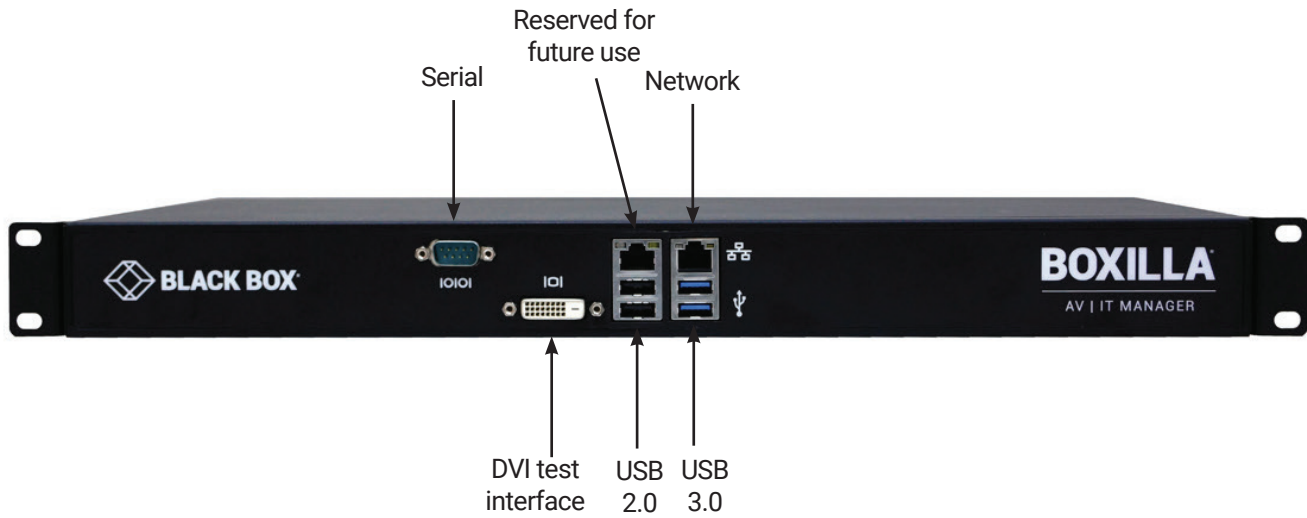
- ◆ Provides management and unlimited device scalability for InvisaPC IP-based KVM systems.
- ◆ Establishes link between Boxilla and DKM (modular and compact) with automatic endpoint synchronization.
- ◆ Enables switching of any DKM transmitter/receiver.
- ◆ Macro switching of grouped devices.
- ◆ Deploy, monitor, and manage large-scale enterprise systems.
- ◆ Provides device discovery and configuration, user authentication.
- ◆ Target pooling—automatically assigned to next available system.
- ◆ Centralized upgrade of endpoint devices.
- ◆ Performance monitoring
- ◆ Supports connection groups, customer certificate upload and Boxilla licensing.

SPECIFICATIONS

Regulatory Approvals	CE, FCC, UL®, RoHS2
Connectors	10/100/1000 autosensing Ethernet, Serial, USB 2.0, USB 3.0
Power	AC input: 100–240 V, 50-60 Hz
1U Rackmount Chassis	19" wide, robust metal construction
Dimensions	System: 1.73"H x 17.3"W x 10.6"D (4.4 x 44 x 26.8 cm)
Weight	System: 10.96 lb. (4.98 kg); Shipping: 14.92 lb. (6.78 kg)
Compatibility	Works with InvisaPC; Supports DKM

Boxilla - Enterprise Level KVM and AV/IT Manager Data Sheet

FRONT PANEL OF THE BOXILLA



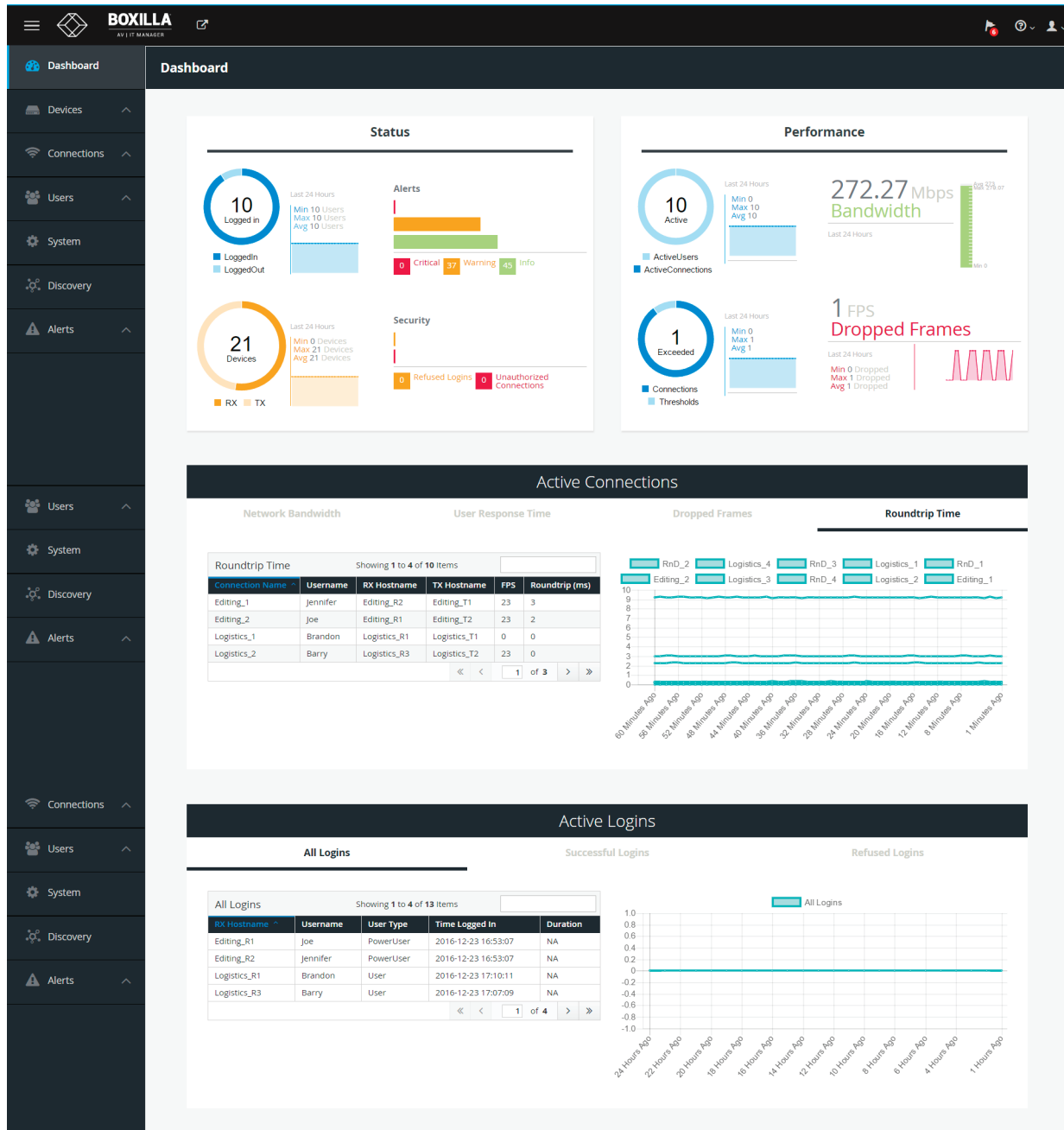
BACK PANEL OF THE BOXILLA



TABLE 1. FRONT AND BACK PANEL COMPONENTS

COMPONENT	DESCRIPTION
Serial port	DB9 male console
Network port	10/100/1000 autosensing Ethernet RJ-45 connector
Power switch	ON/OFF switch
3-prong outlet	100-240 VAC, 50-60 Hz

BOXILLA DASHBOARD



Dashboard drill-down:

Charting of key performance parameters:

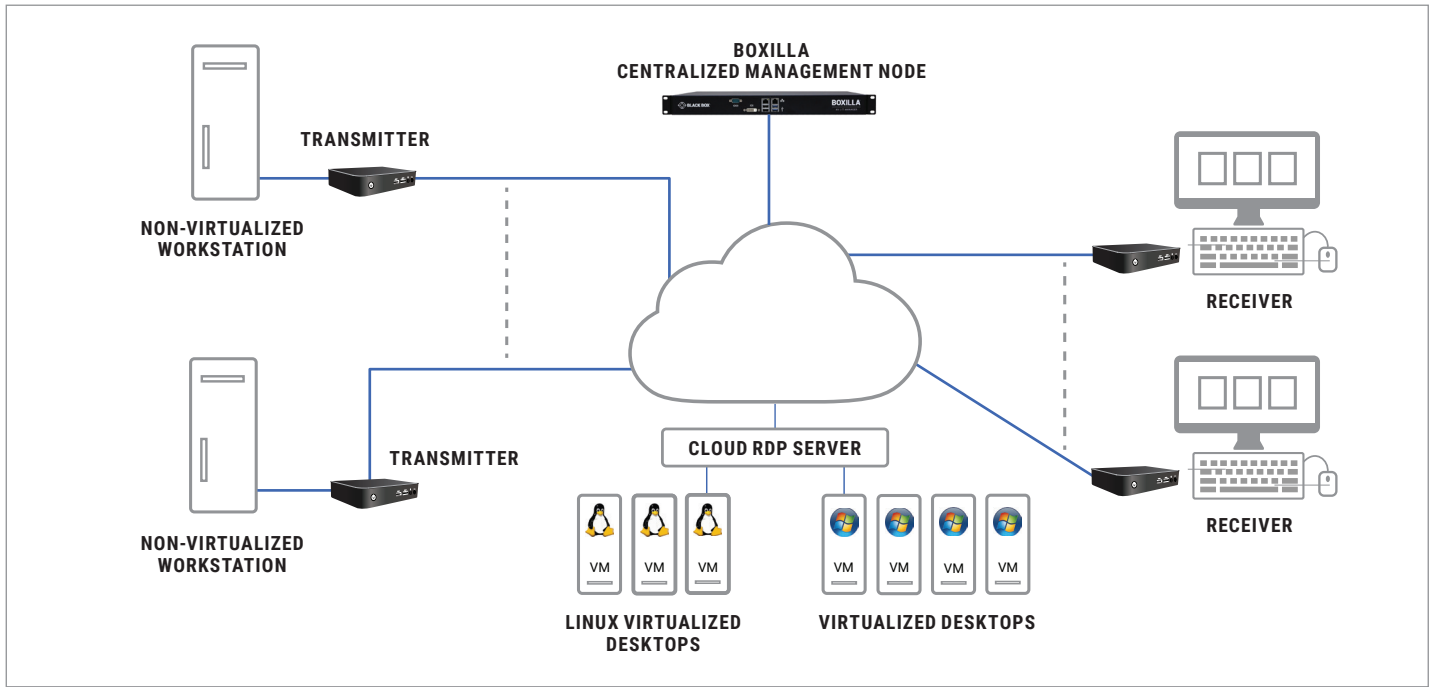
- ◆ Bandwidth
- ◆ Frame rate
- ◆ User changes
- ◆ Power

Configure and Create:

- ◆ Manage domains
- ◆ Users
- ◆ Connections
- ◆ Systems
- ◆ Groups

Boxilla - Enterprise Level KVM and AV/IT Manager Data Sheet

TYPICAL APPLICATION OF THE BOXILLA



ORDERING INFORMATION

Item	Code
Boxilla	
25 Users, Devices or Connections	BXAMGR
50 Users, Devices or Connections	BXAMGR-50
100 Users, Devices or Connections	BXAMGR-100
200 Users, Devices or Connections	BXAMGR-200
300 Users, Devices or Connections	BXAMGR-300
Unlimited Users, Devices or Connections	BXAMGR-ULT
Upgrade Licenses	
Add 25 Users, Devices or Connections	BXAMGR-LIC-25
Add 100 Users, Devices or Connections	BXAMGR-LIC-100
Add Unlimited Users, Devices or Connections	BXAMGR-LIC-ULT

DISCLAIMER

Black Box Corporation shall not be liable for damages of any kind, including, but not limited to, punitive, consequential or cost of cover damages, resulting from any errors in the product information or specifications set forth in this document and Black Box Corporation may revise this document at any time without notice.

ABOUT BLACK BOX

Black Box is a world leading technology solutions provider specializing in complete high-performance KVM, professional A/V signal distribution and extension and switching solutions for mission-critical applications. Black Box is dedicated to delivering superior project engineering, technical support, and 24/7 customer service you can rely on for your most critical operations. Every day, our customers trust us to design, integrate, and maintain reliable control room solutions for broadcasting, post-production, stadiums & arenas, medical, air traffic control, oil & gas, government & military, and utility industries. Leave the tech to us and our comprehensive technology solutions will deliver secure connections, fast-response times, real-time collaboration and more.

© Copyright 2017. Black Box Corporation. All rights reserved. Black Box and the Black Box logo type and mark are registered trademarks of Black Box Corporation. Any third-party trademarks appearing in this publication are acknowledged to be the property of their respective owners.