

MAKE MOBILITY HAPPEN

CREATE THE FOUNDATION NECESSARY
TO DRIVE DIGITAL TRANSFORMATION





TABLE OF CONTENTS

- 01 – MOBILITY RISING
- 02 – UNRESTRICTED MOBILITY – NOW & IN THE FUTURE
- 03 – ENABLING EVERYTHING WIRELESS
- 04 – MANAGING PERFORMANCE BECOMES INCREASINGLY CRITICAL
- 05 – CREATE UNIFORMITY ACROSS ALL LOCATIONS
- 06 – THE RIGHT PARTNER TO MAKE MOBILITY HAPPEN
- 07 – OUR RESULTS TRANSFORM BUSINESS
- 08 – SHATTER THE STATUS QUO



MOBILITY RISING

Digital transformation is underway in businesses of all sizes across every industry – changing the way we live and work. This transformation is

creating a hyper-connected world where ubiquitous access is no longer a luxury... it's critical to a business' success.

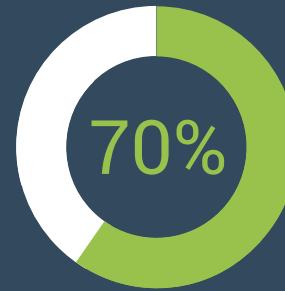
20 billion

mobile and IoT devices will be added by 2021.

Fueling this transformation is the intelligent digital edge – the space where people and devices meet – and the proliferation of mobile devices. These factors are effecting how customers and employees interact with businesses, making a mobile-first strategy the cornerstone of a future-ready IT roadmap.

Externally, a mobile-first strategy can help you drive revenue by building deeper relationships with customers. Internally, it can help you compete, by becoming more responsive, innovative and agile.

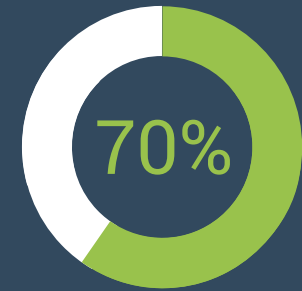
Fail to embrace the intelligent digital edge and the mobile revolution and you run the risk of being outmaneuvered by your competition.



of businesses will be completely mobile by 2020.

Reason:

- Millennials born into a digital world are playing a growing role in business
- In addition, 67% of companies either already have or are planning to add mobile applications



of all data traffic inside buildings will be wireless by 2020.

Reason:

- BYOD expectations are rapidly becoming the new norm
- Mobile traffic is doubling every year





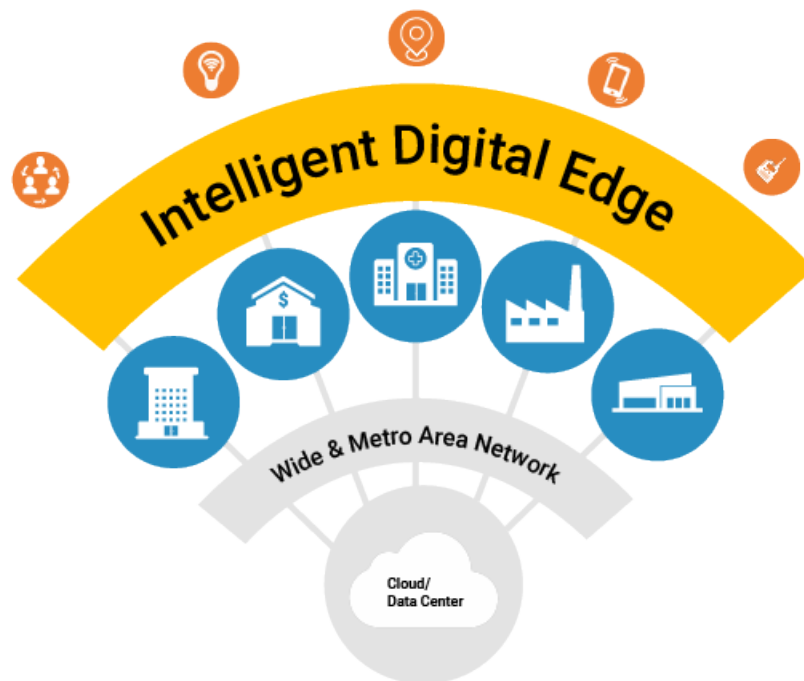
UNRESTRICTED MOBILITY – NOW & IN THE FUTURE

Today, many people think mobility means simply having Wi-Fi coverage. However, now a mobile-first strategy at the intelligent digital edge requires so much more to keep up with the demands and strain that the mobile revolution is placing on networks and enterprises.

Regardless of the industry, IT architectures and the intelligent digital edge must deliver certain criteria to achieve unrestricted, wall-to-wall mobility today... and sustain that capability over time.

Essentials of Today's Mobile-First Strategy

- Strategically enable everything wireless
- High-performance wireless becomes critical
- Create uniformity across all locations
- Manage mobility long-term



ENABLING EVERYTHING WIRELESS

Almost every enterprise is currently using, or is planning to use, devices and applications to improve workflow and operational efficiencies, gather business intelligence to exceed user expectations, and meet building occupancy requirements. As a result, you must be prepared to support everything wireless.

Collaboration

- Mobile collaboration & communications for customers, clients and staff
- Vertical-specific solutions are available for mobile EHR in healthcare, mobile check-in in hospitality and point-of-sale in retail

IoT & Vertical-Specific Devices

- Barcode scanners in warehousing
- Monitoring/alarming solutions in healthcare
- IoT sensors in manufacturing & healthcare

High-Accuracy Location

- Shopper location and dwell-time in retail
- Wayfinding in hospitality
- Raw/finished goods tracking in manufacturing

Smartphones & Tablets

- Support wireless carriers, Wi-Fi & Bluetooth
- Improve workflow with mobile apps
- Use to improve guest experiences, patient care, productivity & staff satisfaction

2-Way Radio & Public Safety

- Manage building maintenance
- Enable public safety requirements





MANAGING PERFORMANCE BECOMES INCREASINGLY CRITICAL

A vital component of building out a successful mobile-first strategy is taking into account all the wireless solutions and wireless technologies needed, to be sure they function in harmony.

Black Box is uniquely positioned to help you achieve this through a combination of technologies (DAS/Small Cells/Wi-Fi), solutions and partners to make sure they all work together and not against each other.

Segment networks and traffic

- Ensure that non-critical applications don't adversely affect mission-critical performance
- Ideal for collaboration, IoT and vertical-specific devices utilizing Wi-Fi

Optimize accuracy & accommodate density

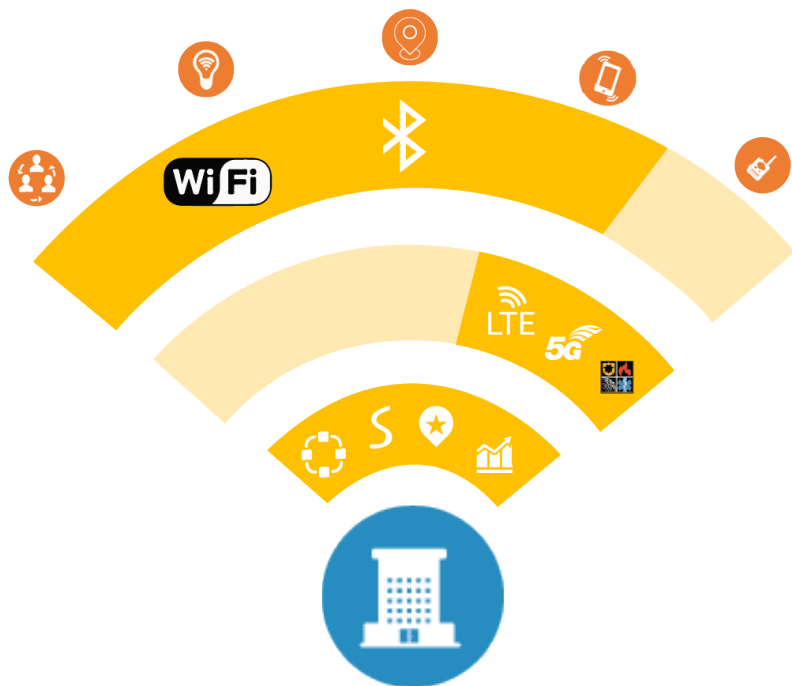
- Supplement Wi-Fi with BLE beacons
- Enables you to maximize the value and functionality of location-oriented applications

Support capacity with Wi-Fi & DAS/Small Cells

- Using a separate DAS/Small Cell solution for smart phones alleviates unnecessary burden on your Wi-Fi network
- Providing equal support for all carriers enhances user experience in applications such as offices, hospitals and airports

Use DAS/Small Cells exclusively

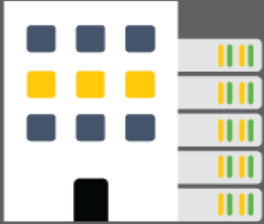
- Ideal for demands of 2-way radio and public safety
- Often specified by national, state and local governments as a requirement for building occupancy



Common Monitoring, Analytics, Security



Large Buildings



High-density and advanced use cases

**1,000+
Devices**

Optimized for
Flexibility,
Control, and
Performance

Optimized for
Ease of
Management

Distributed Buildings



Easily deployed and
managed

**1,000s
Locations**

CREATE UNIFORMITY ACROSS ALL LOCATIONS

Wireless requirements vary from location to location.

For example, large buildings such as HQs, hospitals, conference centers, large manufacturing sites, regional banks and airports tend to have higher density demands. Highly distributed facilities, such as medical office buildings, clinics, and local retail outlets, bank branches, and hotels, tend to require a low-touch approach to deployment and management.

Yet providing consistency across all your locations is imperative to improving user satisfaction and operational efficiency.

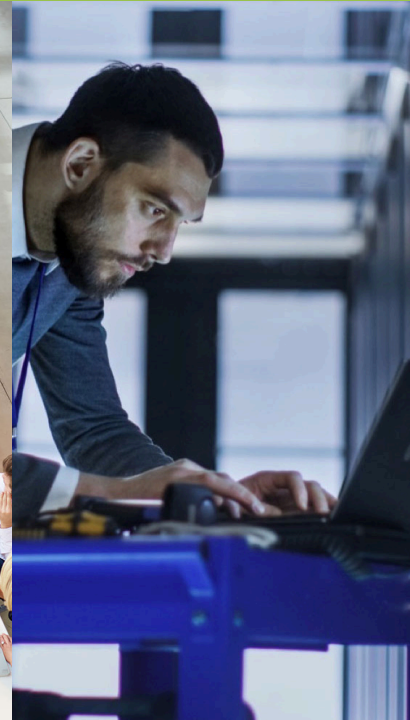
Black Box can help by supporting every wireless technology in every building with a solution optimized to the need. Matching different solutions to building types enables you to meet all wireless technology requirements in a strategic way. While these solutions may appear unique, common monitoring and management, analytics and security tie all of the solutions together at an enterprise level.

Our solutions include cloud and on-premise networking infrastructure with Day 2 Managed Services, periodic revalidation, maintenance and upgrades, secure connectivity to the internet and WAN services, and can meet the security needs required by law.



THE RIGHT PARTNER TO MAKE MOBILITY HAPPEN

Black Box specializes in creating uniform experiences across multiple locations with consistency, speed and agility – regardless of the amount of technology deployed – through a robust Design, Deploy & Manage methodology. With us, your enterprise gets one trusted mobility partner to guide you through the entire process...a partner that will be there to make sure your solution continues to operate at optimal performance after deployment even as your number of apps and devices continues to grow.



DESIGN

We analyze your current and anticipated wireless needs to make sure you get the right mix of solutions for your requirements.

- Coverage/Capacity/Network Assessments
- Active & Predictive Designs
- Per-Building Solution Identification

DEPLOY

Performing thousands of implementations each year, our team has the experience to get your implementation done right – the first time.

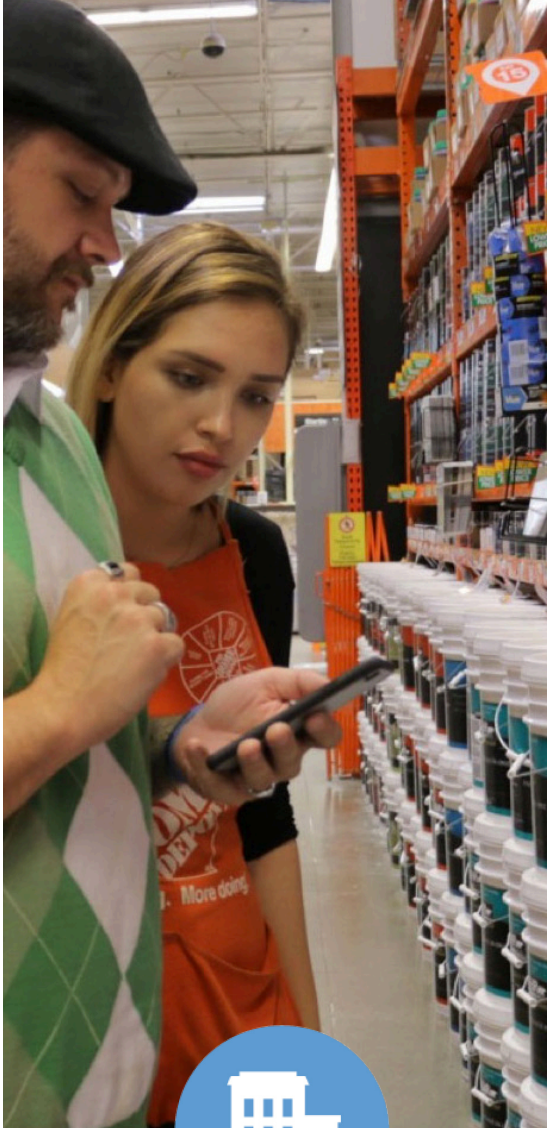
- Configuration & Staging
- Multi-Site Project Management/Deployment
- Acceptance Testing

MANAGE

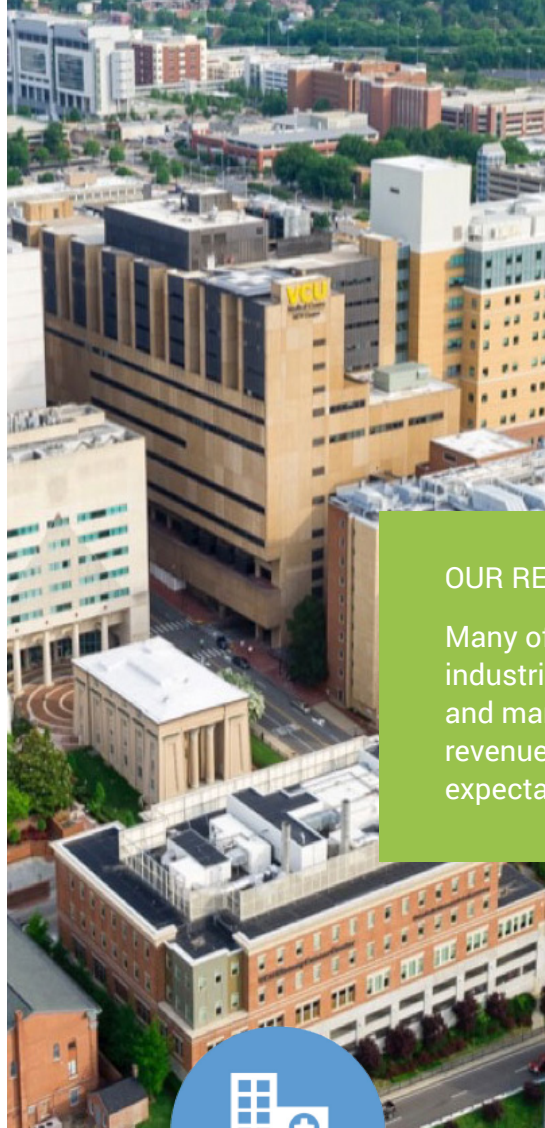
We provide the ongoing support and expertise to ensure your solution evolves with your ever-changing mobility needs.

- Monitoring & Maintenance
- Long-Term Assessments/Reporting

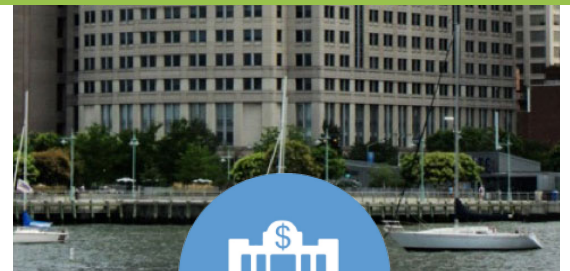




Facilitated location-enabled application at 2,000 stores – deploying 100 stores a night to avoid business disruption



Drove nursing efficiency and patient care to new levels while minimizing IT wireless support required



Standardized smartphone usage across all facilities to set a new operational standard for financial communications

OUR RESULTS TRANSFORM BUSINESS

Many of the biggest names in a wide variety of industries have relied on Black Box to design, deploy and manage a mobility solution capable of driving revenue and innovation, while exceeding end-user expectations.





SHATTER THE STATUS QUO

Embrace the intelligent digital edge with Black Box and unleash the power of unrestricted, wall-to-wall mobility to transform your bottom line opportunities and create the agile, innovative environment necessary to accelerate business velocity.





FOR MORE INFORMATION, PLEASE CONTACT US AT:
855-324-9909 OR VISIT [BLACKBOX.COM/MOBILITY](https://blackbox.com/mobility)

